

A rock-solid control tower for all your measurement operations

GENNECT One has the power to bring the capabilities of multiple measuring instruments together.

View data from multiple instruments on a single graph in real time. Automatically download measurement files from individual instruments and save them in a single folder.

Display instruments' screens in GENNECT One and control them remotely.

In short, GENNECT One lets you control multiple instruments as if you were controlling a single instrument. Beyond a doubt, your measurement capabilities will take a step forward.

GENNECT One

*The name GENNECT was coined from the Japanese word for "field" (genba) and the English word connect.

Connect to and manage instruments with a computer



HUB

Connect each measuring instrument with LAN cable



Power Analysis

PW8001
PW3380

Monitoring Power Quality

PQ3100
PQ3198

Understanding Power Consumption

PWS380
PWS385

Voltage and temperature management

LR3460,60-01
LR3410,LR3400s

Waveform Analysis

MR8000

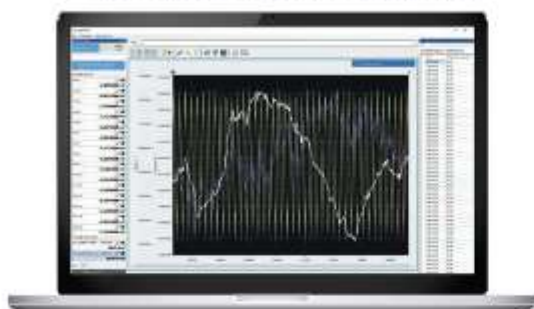
UPS Inspection

BT3554
BT3554-50



Collect and Display measured values by instrument

Collect values in graphs and lists



Logging

Combine Images and other elements



Dashboard

Change instrument settings from your office

Change Instrument settings from a computer



Remote control

Instrument clock synchronization

Collect and organize measurement files from scattered locations

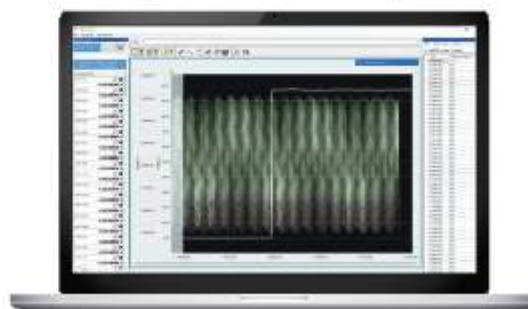
Transfer measurement files to a computer



Automatic file transfer

Data Import

Review acquired files on a single time axis



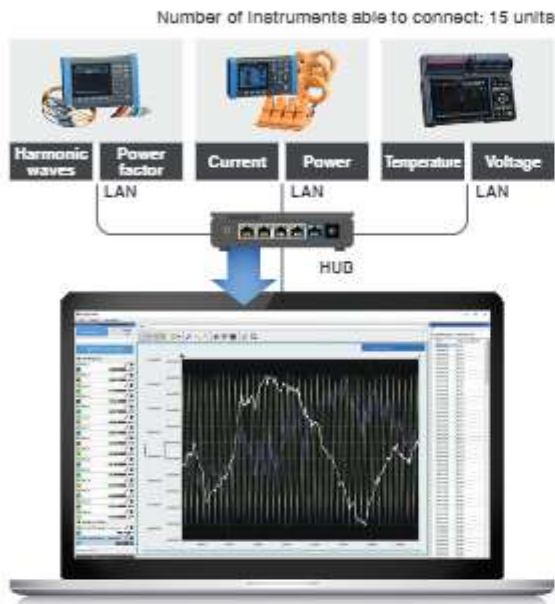
Time-series viewer

Checking measured values from multiple measuring instruments collectively in realtime

Logging

No need to develop a program /

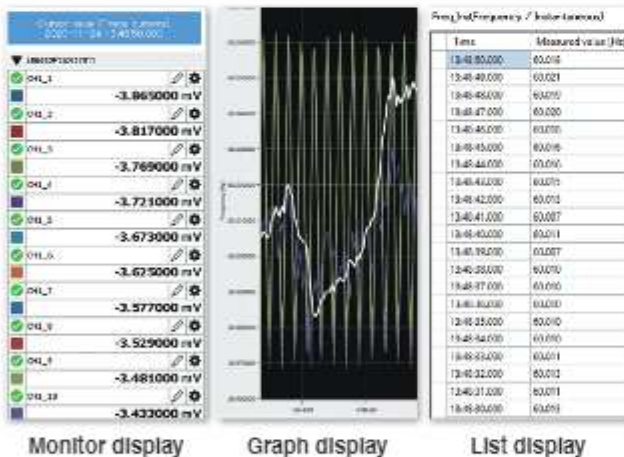
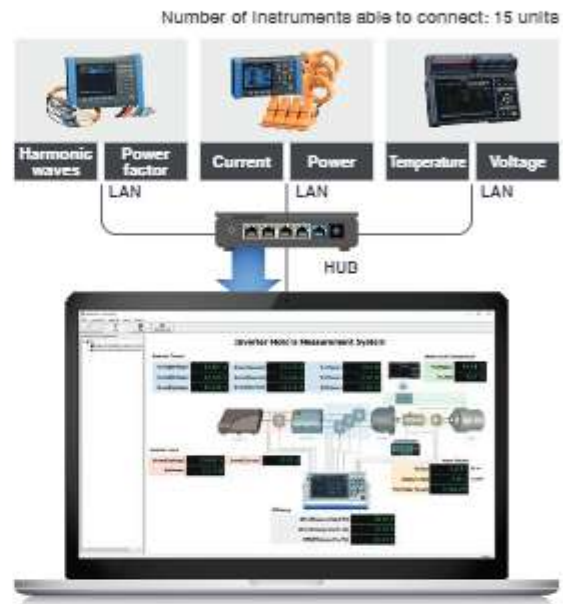
When logging is started, measurement data is acquired at regular intervals from multiple measuring instruments. The acquired data is displayed and stored on the PC in real time.



Dashboard

No need to develop a program /

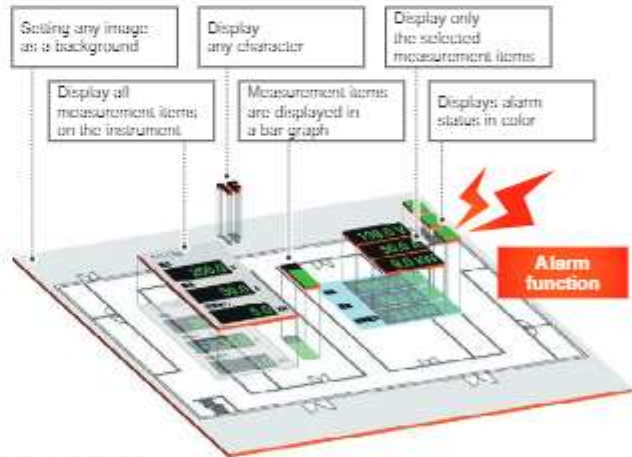
Create a dashboard by laying out measurements, background images, and other parts on the screen. You can display the measured values on the dashboard in real time.



Monitor display

Graph display

List display



Alarm function

Layout parts change to alarm color when the set threshold range is exceeded. The date, time and content of the alarm are automatically saved. Thresholds: upper limit, lower limit, upper and lower limit

Logging intervals	1, 2, 5, 10, 30 sec., 1, 2, 5, 10, 30 min., 1 hour	
Interface	LAN	
Compatible instruments	PW8001 PW3390	Basic Measurement items, Harmonic measurement items (Instantaneous value per interval)
	PQ3100 PQ3198 PW3385 PW3380	Voltage, Current, Power (Instantaneous value per interval) (MAX, MIN, AVE values between intervals)
	LR8400 LR8450-01 LR8410 LR8400s MR8000	Various measurement items such as Temperature, Analog input, etc. (Instantaneous value per interval)
Number of items able to monitor and log	Max. 512 items *Max. 32 items when simultaneously displaying graphs	

Monitor intervals	1, 2, 5, 10, 30 sec., 1, 2, 5, 10, 30 min., 1 hour	
Interface	LAN	
Compatible instruments	PW8001 PW3390	Basic Measurement items, Harmonic measurement items (Instantaneous value per interval)
	PQ3100 PQ3198 PW3385 PW3380	Voltage, Current, Power (Instantaneous value per interval) (MAX, MIN, AVE values between intervals)
	LR8400 LR8450-01 LR8410 LR8400s MR8000	Various measurement items such as Temperature, Analog input, etc. (Instantaneous value per interval)
Number of items able to monitor	Max. 512 items	

Changing instrument settings from the PC

Number of simultaneous operation
: 1 unit at a time



Remote control

Available to change the settings of the instrument and start and stop the measurement from the PC.



Number of simultaneous operation	1 unit at a time
Interface	LAN
Compatible Instruments	PW6001, PW3390, PQ3100, PQ3198, PW3365, PW3360, LR8450, LR8450-01, LR8410, LR8400s, MR6000

Instrument clock synchronization

The clock of the measuring instrument can be synchronized with the PC clock.



Reference time	PC time
Interface	LAN, USB*
Compatible Instruments	PW6001, PW3390, PQ3100, PQ3198, PW3365, PW3360, LR8450, LR8450-01, LR8410, LR8400s, MR6000, BT355-50, BT3554, 3554

*USB is DT30b4, 30b4 only

Import the measurement files saved in the instruments to a PC and check them in a single time series.



Automatic file transfer

Measurement data stored in the instrument can be automatically transferred to the PC.

The data is automatically transferred to the PC after it is saved to the instrument.



Interface	LAN
Compatible Instruments	PQ3100, PQ3198, PW3365, PW3360, LR8450, LR8450-01, LR8410, LR8400s, MR6000

Data Import

The measurement data stored in the instrument can be transferred to the PC manually.

Selecting the saved data of a connected instrument and saving it to a PC

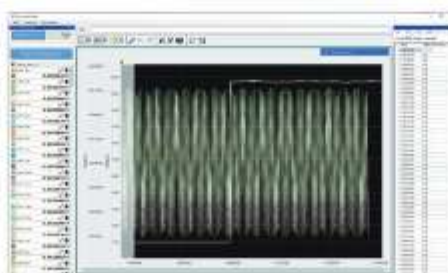


Interface	LAN, USB*
Compatible Instruments	PW3390, PW6001, PQ3100, PQ3198, PW3365, PW3360, LR8450, LR8450-01, LR8410, LR8400s, MR6000, BT3554-50, BT3554, 3554

*USB is DT30b4, 30b4 only

Time-series viewer

After acquiring the measurement data stored in the main unit of the instrument, the data can be checked in a single time series.



Supported data	LR8400s, LR8410, LR8416, LR8450, LR8450-01 waveform data PW3360, PW3365 measurement data LR5000 series measurement data
Analysis function	<ul style="list-style-type: none"> Statistical analysis (AVE, P-P, MAX, MIN, ON, OFF, Standard deviation, Accumulate, Area Value, Integral) Waveform Search (Time, MAX, MIN, Local maximum, Local minimum, Level, Window, Amount of change) Search for Event Marks Editing and CSV output (Overall, between A and B cursors) Image output
Number of display items	Max. 512 items (graphs is Max. 32 items)

Centralized management of measurement files



LAN LAN LAN LAN LAN USB

Data list

Combine the measurement files acquired with GENNECT One into a single data list. You can manage measurement data by measurement site or by measurement time.

Display the measurement files in a list. Manage the measurement files easily.

Title name

Folder classification

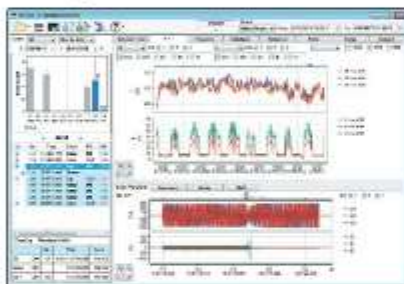
Input comments

Search tag



Clicking on a measurement file launches the browsing software and displays the file.

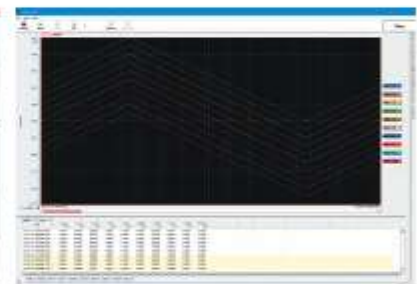
*You need to install the software beforehand



PQ ONE



POWER LOGGER VIEWER SF1001

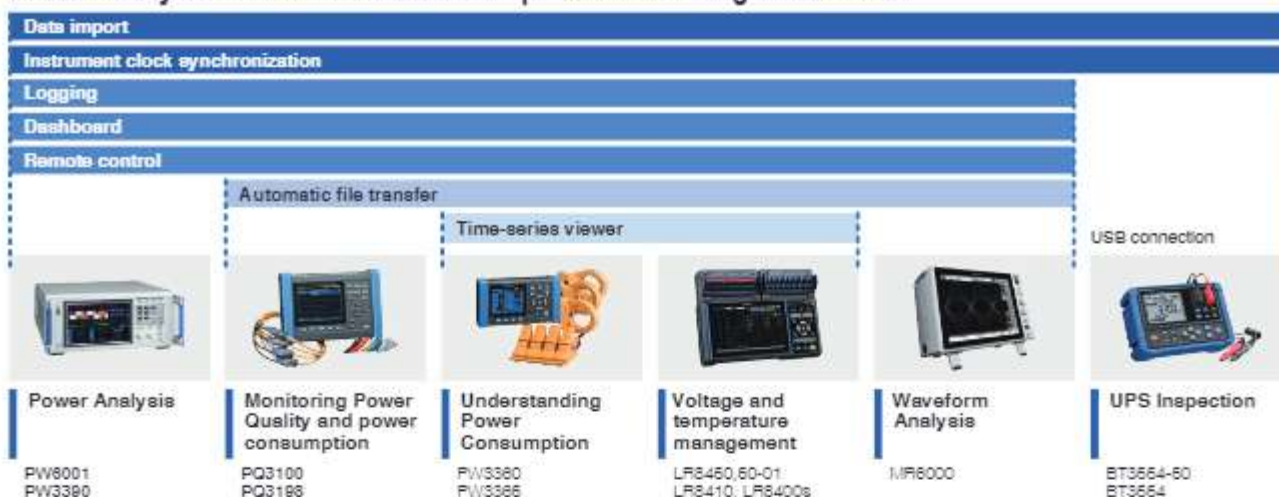


Logger utility

Listed measurement files	Measurement files obtained by the file transfer (automatic) of GENNECT One. Measurement files obtained by the file transfer (manually) of GENNECT One. Importing GENNECT Cross measurement files. (hok format) *1 Importing GENNECT Remote measurement files. (hok format) Importing measurement data from Internal memory, Recording media or External Storage via LAN connection. Importing measurement data from Internal memory via USB connection. Image data (jpg, bmp, png, and gif formats) and pdf data.
Viewing Software	PQ ONE *2: PQ3100, PQ3188 POWER LOGGER VIEWER SF1001 *2: PW3360, PW3365 Logger utility *2: LR8400, LR8410, LR8450, LR8400-01 Waveform Viewer (Wv) *2 or WAVE PROCESSOR 9335 *3: MR8875, MR8000 MR6000 Viewer *2: MR6000 Graph viewer for real-time measurement of GENNECT One *2: Data acquired by the logging function of GENNECT Cross and the monitoring function of GENNECT Remote.

*1: Battery, General measurement, Logging only *2: Free software. *3: Paid software.

Functionality of GENNECT One and compatible measuring Instruments



Specification

Logging	
Interface	LAN
Function	Generate graph and list displays of measured values from LAN-connected instruments in real time.* *Acquire measured values (current values) displayed on instruments at a set interval (as short as 1 sec.) using the computer's timer.
Logging Intervals	1, 2, 5, 10, 30 sec., 1, 2, 5, 10, 30 min., 1 hour
Measurement parameters	<ul style="list-style-type: none"> • PW6001, PW3390: Basic Measurement Items, Harmonic measurement Items (Instantaneous value per Interval) • PQ3100, PQ3198, PW3365, PW3360: Voltage, Current, Power (Instantaneous value per Interval, MAX, MIN, AVE values between Intervals) • LR8400, LR8401, LR8402, LR8410, LR8450, LR8450-01, MR6000: Various measurement Items such as Temperature, Analog Input, etc. (Instantaneous value per Interval)
Number of items able to monitor and log	Max. 512 Items *Max. 32 Items when simultaneously displaying graphs
Recording time	Recording time: Continuous measurement/Set time, file segmentation: 1 day / 1 hour * Stop logging when the storage capacity of the PC drops below 512MB
Dashboard	
Interface	LAN
Function	<ul style="list-style-type: none"> • Monitor measured values in real time from LAN-connected instruments.* • Display alarms in real time when a measured value exceeds a threshold.* • Display measured values on a user-selected image. *Acquire measured values (current values) displayed on instruments at a set interval (as short as 1 sec.) according to the computer's timer.
Monitor Interval	1, 2, 5, 10, 30 sec., 1, 2, 5, 10, 30 min., 1 hour
Measurement parameters	<ul style="list-style-type: none"> • PW6001, PW3390: Basic Measurement Items, Harmonic measurement Items (Instantaneous value per Interval) • PQ3100, PQ3198, PW3365, PW3360: Voltage, Current, Power (Instantaneous value per Interval, MAX, MIN, AVE values between Intervals) • LR8400, LR8401, LR8402, LR8410, LR8450, LR8450-01, MR6000: Various measurement Items such as Temperature, Analog Input, etc. (Instantaneous value per Interval)
Number of measurement items	Max. 512 Items
Remote control	
Interface	LAN
Function	Control LAN-connected instruments from a computer.
Compatible instruments	PQ3100, PQ3198, PW3360, PW3365, PW3390, PW6001 LR8400, LR8401, LR8402, LR8410, LR8450, LR8450-01, MR6000
Number of simultaneous operation	1 unit at a time
Automatic file transfer	
Interface	LAN
Function	Automatically send files saved by LAN-connected instruments to a computer.
Compatible instruments	PQ3100, PQ3198, PW3360, PW3365, LR8400, LR8401, LR8402, LR8410, LR8450, LR8450-01, MR6000
Data Import	
Interface	LAN, USB (USB is BT3654, 3654 only)
Function	Acquire files saved by LAN-connected instruments with a computer.
Compatible instruments	PQ3100, PQ3198, PW3360, PW3365, PW3390, PW6001, LR8400, LR8401, LR8402, LR8410, LR8450, LR8450-01, MR6000, BT3654-60, BT3654, 3654
Other Functions	
Files loading	Data file (.hok) obtained by GENNECT Cross for iOS/Android *Logging, General Measurement, Image and battery formats only *No direct Bluetooth® connection is possible, please use the smartphone app for Bluetooth® data collection
Instrument clock synchronization	PQ3100, PQ3198, PW3360, PW3365, PW3390, PW6001, LR8400, LR8401, LR8402, LR8410, LR8450, LR8450-01, MR6000, BT3654-60, BT3654, 3654
CSV output	Output 512 items at once (logging function)
Report creation	PDF, Word and Excel formats

Operating environment

Supported OS	Windows Vista (32bit/64bit SP2 or more), Windows 7 (32bit/64bit), Windows 8.1 (32bit/64bit), Windows 10 (32bit/64bit)
Software environment	Microsoft .NET Framework 4.0, 4.5, 4.6, 4.7
CPU	2 GHz or more operating clock
Memory	4 GB or more
Display	Resolution 1024 × 800 or more
Hard disk	Free space of 1 GB or more

HIOKI
HIOKI E. E. CORPORATION

HEADQUARTERS

81 Koizumi,
Ueda, Nagano 388-1192 Japan
<https://www.hioki.com/>



Scan for all
regional contact
information

Note: Company names and product names appearing in this brochure are trademarks or registered trademarks of various companies.

DISTRIBUTED BY