



This compact plug-in signal converter connects with 3-wire type potentiometer, and provides DC voltage or current. This converter has Isolator built-in and a burnout protection circuit as standard equipment

Features

- ★ Zero & span adjustment $\pm 10\%$ full scale (Fine adjustment by 25 turn trimmer)
- ★ Safe design by dielectric strength of 3000Vac
- ★ 5 years warranty, long life
- ★ CE approved
- ★ Burnout protection circuit as standard equipment

Ordering code

WSP- **MS** - **□□** - **□□**

Code	Input (Total Resistance)	Span Ad. Range	Zero Ad. Range
30	50 to 500 Ω FS	50 to 100% FS	50 to 50% FS
31	501 to 10k Ω FS		
19	0 to 343 Ω (1k Ω FS)	$\pm 20\%$ FS (FS = 343 Ω)	$\pm 20\%$ FS (FS = 343 Ω)
99 *1	Contact us for other than the above		

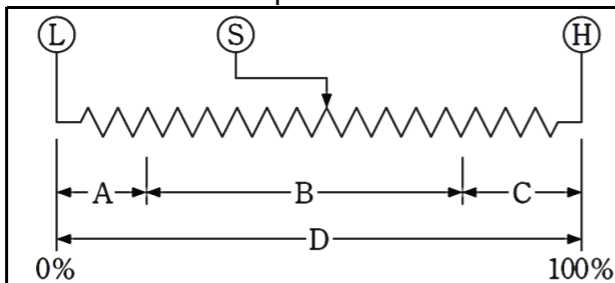
Code	Output	Allowable Load Resistance
A	4 to 20mA _{dc}	750 Ω or less
B	1 to 5mA _{dc}	3k Ω or less
D	0 to 1mA _{dc}	15k Ω or less
E	0 to 10mA _{dc}	1.5k Ω or less
G	0 to 20mA _{dc}	750 Ω or less
H	1 to 5V _{dc}	1k Ω or more
J	0 to 10mV _{dc}	10k Ω or more
K	0 to 100mV _{dc}	100k Ω or more
L	0 to 1V _{dc}	200 Ω or more
N	0 to 5V _{dc}	1k Ω or more
P	0 to 10V _{dc}	2k Ω or more
R	± 10 V _{dc}	2k Ω or more
S *1	Contact us for other than the above Current output 20mA or less Voltage output 10V or less	

Code	Test Report
X	None
T	With Test report

Code	Power Supply
A	100 to 240Vac $\pm 10\%$ 50/60Hz
D	24V _{dc} $\pm 10\%$
*2	10.8 to 30V _{dc}
8	110V _{dc} $\pm 10\%$

★ Note: Zero & Span Adjustment

The measuring range must be 50% or more of total resistance of a potentiometer.



- A: Out of Range, lower side resistance
- B: Measuring range
- C: Out of Range, upper side resistance
- D: Total resistance of a Potentiometer

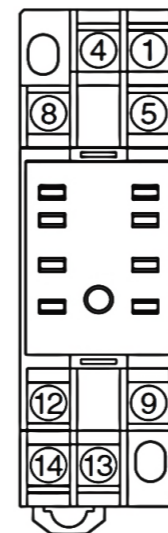
A procedure for adjustment, adjust Zero first, and then adjust the Span.

- * 1... CE approval do not adapt input range code 99 and output range code S.
- * 2... CE approval do not adapt when power supply is 10.8V_{dc} to 30V_{dc}.

Specifications

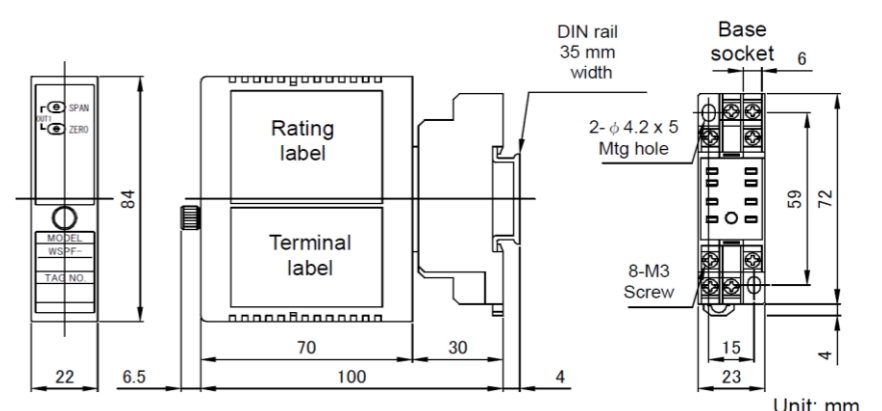
Input signal	3-wire type potentiometer
Accuracy	$\pm 0.1\%$ FS (at 23°C)
Response time	Approx. 25ms (0 to 90%)
Allowable load	Current output
	15V or less of voltage drop between output
	Voltage output Load current 5mA or less *1 μ A or less if the output is less than 1V FS
Span adjustment	50 to 100% of rated input (25 turn trimmer) ($\pm 20\%$ for input 19)
Zero adjustment	0 to 50% of span (25 turn trimmer) ($\pm 20\%$ for input 19)
Operating temperature	-5 to +55°C
Operating relative humidity	90% or less (Non-condensing)
Temperature coefficient	$\pm 0.015\%$ FS of span per °C
Burnout protection	Upscale / downscale *Please specify when you order for downscale
Isolation	Between input, output, and power supply
Insulation resistance	100M Ω or more with 500V _{dc} megger
	Between input, output, and power supply terminal
Dielectric strength	2000Vac for 1 minute
Power consumption	Approx. 4.4VA (AC), Approx. 64mA (DC)
Power supply variation	$\pm 0.1\%$ FS (within the range of rated voltage)
Dimensions	84(H) X 23(W) X 106.5(D)mm
Weight	Approx. 130g
Structure	Plug-in (Body part and socket part)
Connection	M3 SEMS screw part of the base socket (Tightening torque 0.6N·m)
Mounting	DIN rail or wall surface
Case color and material	Ivory, ABS resin, flame retardant grade UL94V-0
EMC directive	EN61326-1, EN61010-1, EN IEC 63000 Installation category : II, Pollution degree : 2
Rated altitude	2000m or less

Terminal connections



No.	Symbol	Description
1	INPUT HIGH SLIDE LOW	Input
4		
5		
8	NC	No connection
9	OUTPUT-1 + -	Output
12		
13	POWER U(+) V(-)	Power Supply
14		

Dimensions



* Specification is subject to change without notice