



## Features

- ★ Compact DIN size.
- ★ 4 to 20mA input loop powered. (No external power source required.)
- ★ Scaling function.
- ★ LCD display 7.4mm (unit : % or °C selectable)
- ★ 48mm(W) x 24mm(H) x 24mm(D) 1/32 DIN size

## Ordering code

AL - 203

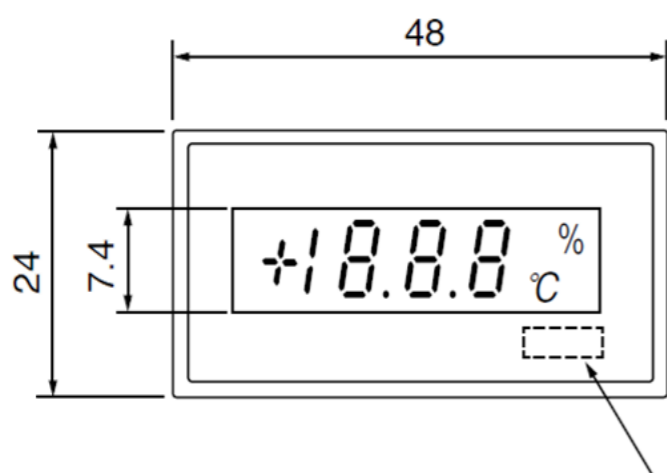
Model code	Measurement range	Resolution	Max. allowable input	Accuracy
AL-203	4 to 20mA	0.1mA	±50mA	±(0.2% of FS +2 digit)

## Specifications

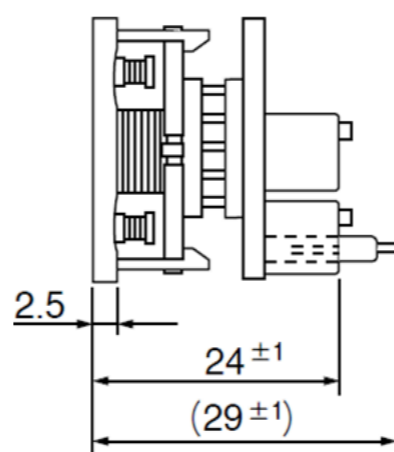
<b>Input</b>	4 to 20mA
<b>Display</b>	3 1/2 digits LCD 7.4mm
<b>Polarity</b>	'-' is displayed automatically at negative polarity
<b>Display range</b>	-1999 to 1999
<b>Measurement / input / scaling range</b>	Offset: ±200, full scale: 100 to 1999
<b>Decimal point</b>	Able to set to any digit
<b>Zero display</b>	Leading zero suppression
<b>Sampling rate</b>	2.5 times / second (approx. 400ms)
<b>Operating temperature</b>	0 to 50°C
<b>Operating relative humidity</b>	35 to 85% (non-condensing)
<b>Power supply</b>	Operate by input current 4 to 20mA
<b>Dimensions</b>	48mm(W) x 24mm(H) x 24mm(D) 1/32 DIN size
<b>Weight</b>	Approx. 20g

## Dimensions

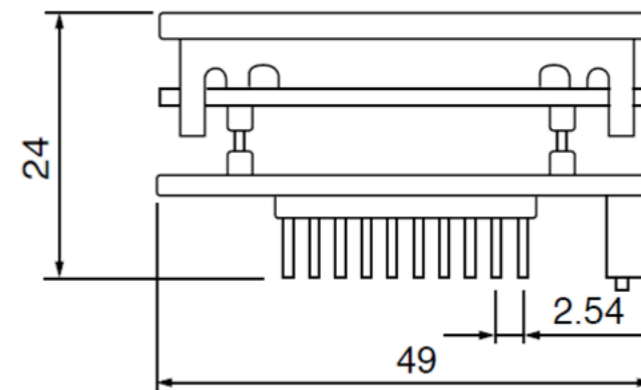
### ◆ Front view



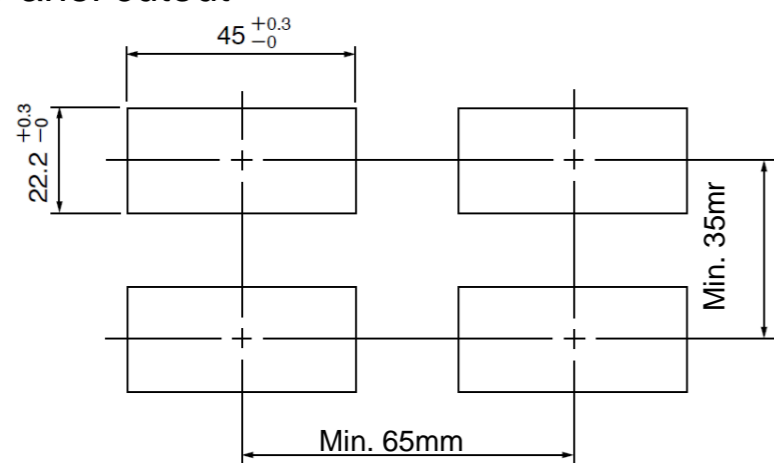
### ◆ Side view



### ◆ Top view



### ◆ Panel cutout

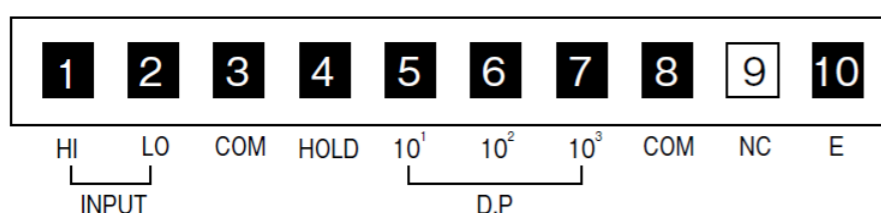


Carving position (option)

\*Panel thickness 0.8 to 3.2mm

(Unit : mm)

## Terminal Connections



\* Specification is subject to change without notice