

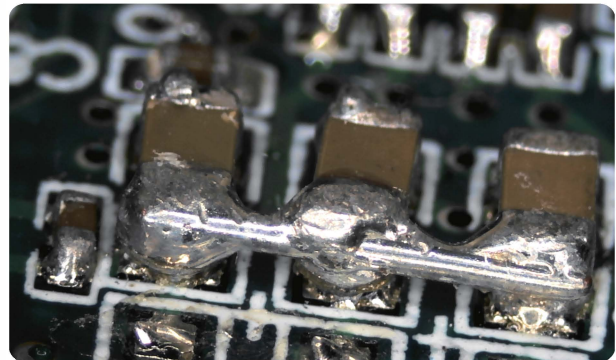


Microscope for Computer

**USB
2.0**

SKM-Z300C-PCM2

Zoom Type



| | | | | | |
|----------|----------|---------|---------|---------|---------|
| 1 | 0.5 | 0.75 | 1.0 | 1.5 | 2.0 |
| 2 | 45 | 67.5 | 90 | 135 | 180 |
| 3 | 10.8x6.1 | 7.2x4.1 | 5.4x3.0 | 3.6x2.0 | 2.7x1.5 |

**Budget prices in high definition.
Using zoom lens is easy.
Can measure and save images.**

When conversion lens x0.5 SKL-B is attached, a range of observation is double.
When conversion lens x2.0 SKL-A is attached, a range of observation is half.

1.Optical magnification 2.magnification on monitor 20 inch(UXGA) 3.Range of Observation(mm)

Working Distance 88mm

When Conversion lens x0.5 SKL-B is attached (x22.5-x90 magnification on monitor),
working distance 150mm

When Conversion lens x2.0 SKL-A is attached (x90-x360 magnification on monitor),
working distance 32mm

*Conversion lenses are not included in the price.

SKM-Z300C-PCM2 of Standard contents

Zoom lens (SKL-Z300C)
CMOS camera with 2 million pixels
LED Ring light(SKLS-A)

Stand(SKS-ST100A)
Holder(SKS-HOLD-A)
Viewer saving software(SK-Viewer)

USB Camera specification

<Operating Environment>

| | Necessary condition |
|-----------------------|---|
| OS | Windows7,8,10(32,64bit) |
| USB Port | USB 2.0 Port (Intell host controller) |
| CPU | Recommend Core i or better |
| Memory | More than 2.0GB |
| Graphic | More than 24bit colour |
| Temperature, humidity | Temperature:0-40°C, Humidity:10-80%(No condensation) |

<Specification>

| | |
|----------------------|------------------------------|
| Shooting device | 1/2.8 inch CMOS image sensor |
| Valid pixels | 1984(H)X1225(V) |
| Scan mode | Progressive |
| Maximun frame rate * | 30 fps |
| Interface | USB2.0(Based on UVC ver1.1) |
| Power supply | USB bus power |
| Resolution | 1920X1080 |

*The actual display speed differs according to the composition and the computer settings.