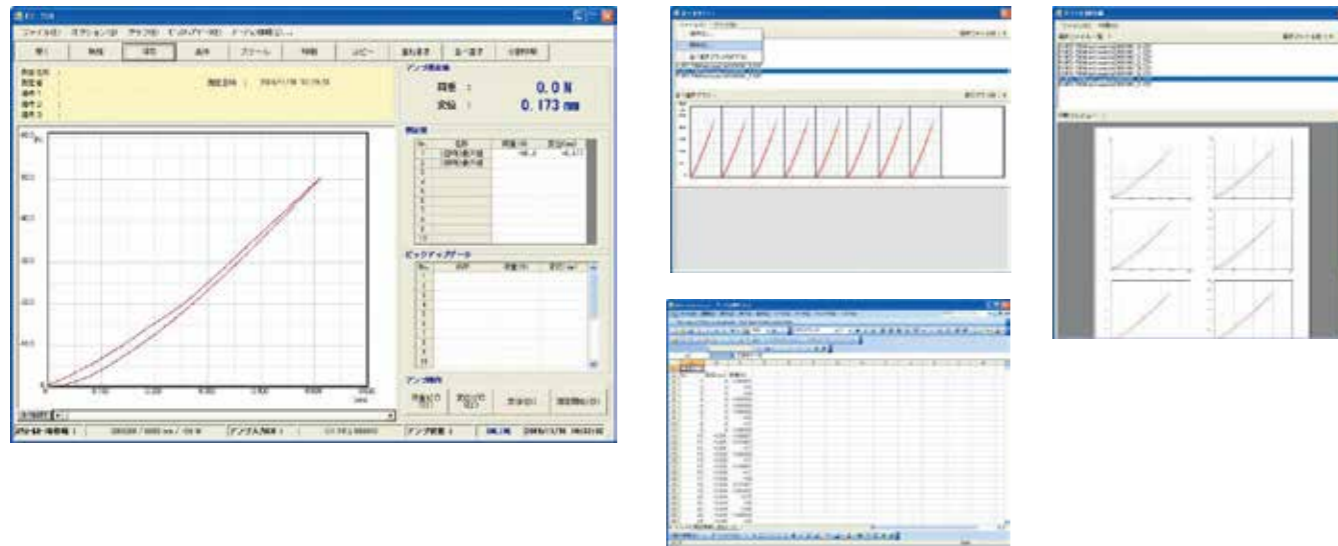


Standard Softwares

FS-700 (MODEL-1016 Series Basic Dedicated Software)



This is data processing application software dedicated to MODEL-1016 series amplifiers. Real-time data output and waveform drawing at high-speed sampling is possible. For tests, almost all conditions of MODEL-1016 series can be set on a PC. Not only continuous testing, but the X.LS format and CSV format to directly save data to Excel are possible. The available print styles include overlapped, shifted and split print. (The PC and Excel are to be provided by the user.)

Recommended Environment

Japanese Windows7or8
Memory: 1G bytes or more
38400bps serial port: 1
CD-ROM drive for program installation: 1
Internet Explorer 5.0 or later
English OS accepted
MODEL-1016 Series Basic Version only

FSN-500 (V-103/V-103A Switch Feeling Dedicated Software)



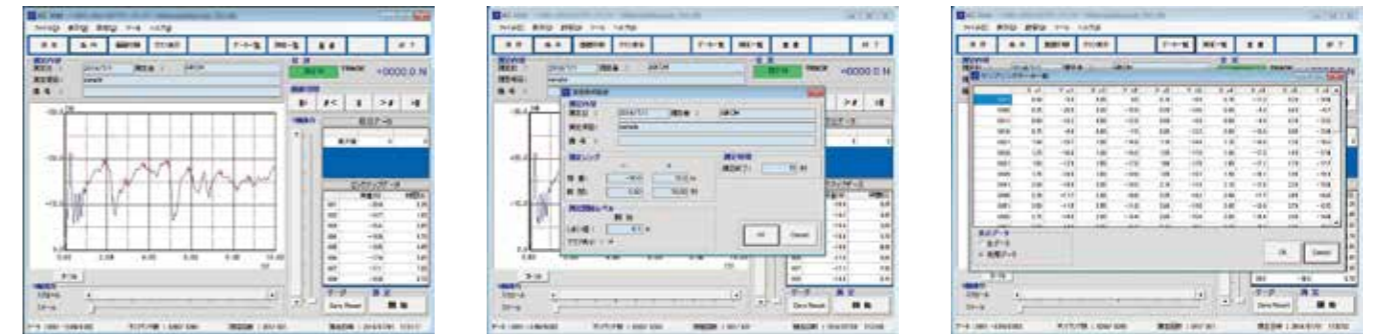
This is application software dedicated to V-103 and V-103A switch feeling. When the optional ROM card V-103 or CF card V-103A is used, measured data/graph data can be loaded to a PC and processed, saved and printed. (The PC and Excel are to be provided by the user.)

Recommended Environment

Japanese Windows7or8
Memory: 1G bytes or more
38400bps serial port: 1
CD-ROM drive for program installation: 1
Internet Explorer 5.0 or later
English OS accepted

Standard Softwares

RZ-3000 (Software dedicated to RZ Series)



This is dedicated software designed to store data acquired by RZ Series in a PC.

It acquires and sends real-time data to a PC to show waveform graphs and maximum values.

Measurement data can be output in CSV files and output CSV files can be opened using Excel.

The standard interface is the USB interface. (The USB cable is included with the RZ force gage as a standard accessory.)

Recommended Environment

Windows7or8, Japanese or English
Memory: 2G bytes min.
CD-ROM drive for program installation x1

FL-2005 (Software exclusive for the RX-FL Series)



The FL-2005 is data loading application software designed exclusively for the RX-FL Series. It runs on Microsoft Windows operating systems. It receives feeling measurement data output by the RX-FI Series, which is connected to the RS232C port of a PC with RX-OP-2, carries out GO/NG judgment, data recording and other processing. It has various functions: Judgment, Various types of totalization processing, Printing, Simple histogram display, Data storage in CSV files, etc.

Recommended Environment

Japanese WindowsXP only
Memory: 1G bytes or more
38400bps serial port: 1
CD-ROM drive for program installation: 1
Internet Explorer 5.0 or later