

Electromagnetic anechoic box / Shield box

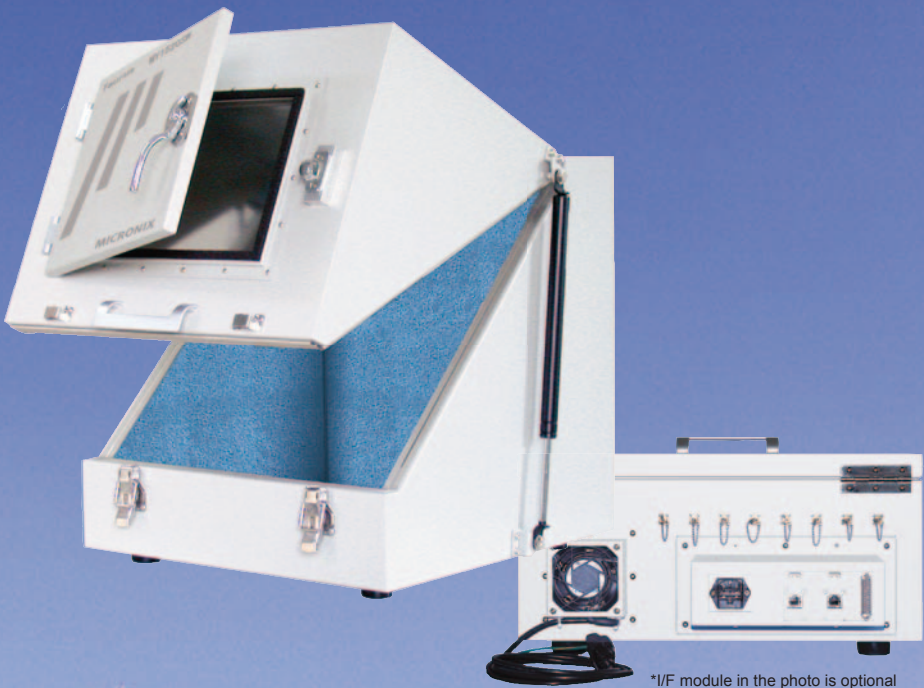
Taurus series



By offering many choices of interface modules,

Taurus series has realized

- ◆ Low price
- ◆ Quick delivery



*I/F module in the photo is optional

High quality & high reliability anechoic box
the measuring instrument manufacturer offers.

Taurus series Lineup

MY1510/1510N

Small size



- Outside dimensions: 380(W)×165(H)×380(D)mm
 Inside dimensions: 315(W)×100(H)×315(D)mm
 (N) Inside dimensions: 375(W)×160(H)×375(D)mm
 Shielding effectiveness: 70dB typ @2.4GHz
 (N) Shielding effectiveness: 60dB typ @2.4GHz
 Reflection loss: more than 20dB
 @ ≥ 2.4GHz, urethane ①
 MY1510N has no absorber.
 Connector: 2 pcs of SMA @back
 I/F module: 1 module max @back
 Weight: approx. 3.5kg @excluding I/F module
 (N) Weight: approx. 1.9kg @excluding I/F module

MY1515

With ventilation fan



- Outside dimensions: 465(W)×214(H)×465(D)mm
 Inside dimensions: 400(W)×150(H)×400(D)mm
 Shielding effectiveness: 70dB typ @2.4GHz
 Reflection loss: more than 20dB
 @ ≥ 2.4GHz, urethane ①
 Connector: 8 pcs of SMA @back
 I/F module: 1 module max @back
 AC Fan: 0.56 cubic m/min(max flow rate) @back
 Intake @left side
 Weight: approx. 1.0kg @excluding I/F module
 *I/F module in the photo is optional

MY1520/1520N

Medium size



- Outside dimensions: 520(W)×520(H)×520(D)mm
 Inside dimensions: 460(W)×460(H)×460(D)mm
 (N) Inside dimensions: 515(W)×515(H)×515(D)mm
 Shielding effectiveness: 70dB typ @2.4GHz
 (N) Shielding effectiveness: 60dB typ @2.4GHz
 Reflection loss: more than 20dB
 @ ≥ 2.4GHz, urethane ①
 MY1520N has no absorber.
 Connector: 2 pcs of SMA @back
 I/F module: 2 modules max @back
 Weight: approx. 15kg @excluding I/F module
 (N) Weight: approx. 12.3kg @excluding I/F module
 Option •Wooden table MT104
 •Absorber urethane ②

MY1525

With ventilation fan & 90dB shielding



- Outside dimensions: 460(W)×570(H)×582(D)mm
 Inside dimensions: 340(W)×340(H)×400(D)mm
 Shielding effectiveness: 90dB typ @2.4GHz
 Reflection loss: more than 20dB
 @ ≥ 1.2GHz, urethane ②
 Connector: 2 pcs of SMA @back
 I/F module: 1 module max @floor
 Dedicated I/F module(IFM10, IFM11)
 AC Fan: 0.56 cubic m/min(max flow rate) @back
 Intake @right side
 Weight: approx. 17kg @excluding I/F module

MY1530/1530N

Large size



- Outside dimensions: 1120(W)×705(H)×620(D)mm
 Inside dimensions: 1000(W)×500(H)×500(D)mm
 (N) Inside dimensions: 1115(W)×615(H)×615(D)mm
 Shielding effectiveness: 70dB typ @2.4GHz
 (N) Shielding effectiveness: 60dB typ @2.4GHz
 Reflection loss: more than 20dB
 @ ≥ 1.2GHz, urethane ②
 MY1530N has no absorber.
 Connector: 4 pcs of SMA
 @2 pcs at back and each one at both sides
 I/F module: 4 modules max @back
 Weight: approx. 56kg @excluding I/F module
 (N) Weight: approx. 42kg @excluding I/F module
 Option •Wooden table MT105
 •Turn table unit MT103
 •Absorber urethane ① or ③

MY1520SW

With shield window for monitoring the inside



(Ex) Monitoring PC put inside

- Outside dimensions: 520(W)×520(H)×520(D)mm
 Inside dimensions: 460(W)×460(H)×460(D)mm
 Shielding effectiveness: 70dB typ @2.4GHz
 Reflection loss: more than 20dB
 @ ≥ 2.4GHz, urethane ①
 Connector: 2 pcs of SMA @back
 I/F module: 2 modules max @back
 Shield window: 300(W)×200(H)mm @front
 Weight: approx. 15kg @excluding I/F module

※The model with suffix "N" is not equipped with absorber.

※Unless otherwise specified, the AC voltage is 100V.

Visit our website and refer to
"Application note"
 when considering the use.

Taurus series Option

I/F module

I/F module is equipped with AC power supply, DC power supply, LAN, USB, SMA, BNC, N, Triaxial, D-sub connectors and Through pipe.

I/F module is common to each model of **Taurus** series.

Available for models except MY1525

Model	Equipped connectors
IFM1	AC(1pc), LAN(1pc), USB(1pc), D-sub9pin(1pc)
IFM2	AC(1pc), LAN(2pcs), USB(2pcs), D-sub9pin(1pc)
IFM3	AC(1pc), LAN(2pcs), USB(2pcs), D-sub25pin(1pc)
IFM4	DC(1pc), LAN(1pc), USB(1pc), D-sub9pin(1pc), D-sub25pin(1pc)
IFM5	SMA(2pcs), BNC(2pcs), N(2pcs), Triaxial(2pcs)
IFM6	Through pipe (two kinds are selectable.) ※ Inner diameter is different depending on the frequency band.

Available for only MY1525

IFM10	AC(1pc), LAN(1pc), USB(2pcs), D-sub9pin(1pc)
IFM11	DC(1pc), LAN(1pc), USB(2pcs), D-sub9pin(1pc)



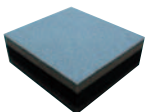
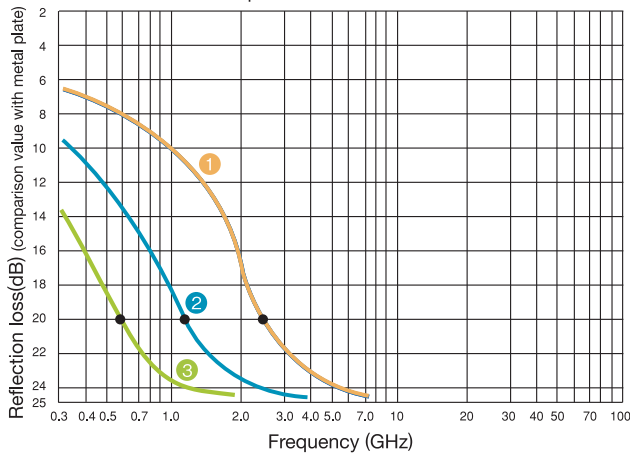
MY1520 equipped with two I/F modules

Radio wave absorber

The radio wave absorber of the urethane foam, which has similar characteristics with all of linear, elliptic and circular polarizations, is used in Taurus series. The standard absorber is MYA-75 for MY1510/1515/1520/1520SW and MYA-77 for MY1525/1530.

However, MY1520 and MY1530 can select another absorber such as MYA-77 for MY1520 and MYA-75 or MYA-79 for MY1530 as option.

Absorption characteristics data



No.	Type	Frequency range	Thickness
①	MYA-75	≥2.4GHz	approx.3cm
②	MYA-77	≥1.2GHz	approx.6cm
③	MYA-79	≥0.6GHz	approx.12cm

Wooden table MT104/105

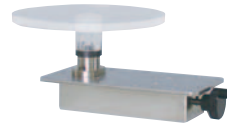


MY1530

MT104 (for MY1520/N)
Dimensions: 600(W)×600(D)×700(H)mm
Withstand load: 100kg

MT105 (for MY1530/N)
Dimensions: 1220(W)×720(D)×700(H)mm
Withstand load: 100kg

Turn table unit MT103



Turn table unit for
MY1530/1530N

Table diameter: 200mmφ
Withstand load: 10kg
Table material: Acrylic resin
Rotation angle: 360°

Antenna

Dipole antenna



Model	Frequency range
M301/401	0.8 to 1GHz
M302/402	1.25 to 1.65GHz
M303/403	1.7 to 2.2GHz
M304/404	2.25 to 2.65GHz
M305/405	300 to 500MHz
M306/406	4.8 to 6.2GHz
M307/407	470 to 770MHz
M308	3.6 to 4.2GHz
M309	4.4 to 4.9GHz

Connector : SMA(P)@M300,N(P)@M400

Log periodic antenna M213/213R



This is a linear polarization antenna with frequency bandwidth from 0.75 to 2GHz. The reference antenna (M213R) is with an antenna gain & VSWR data.

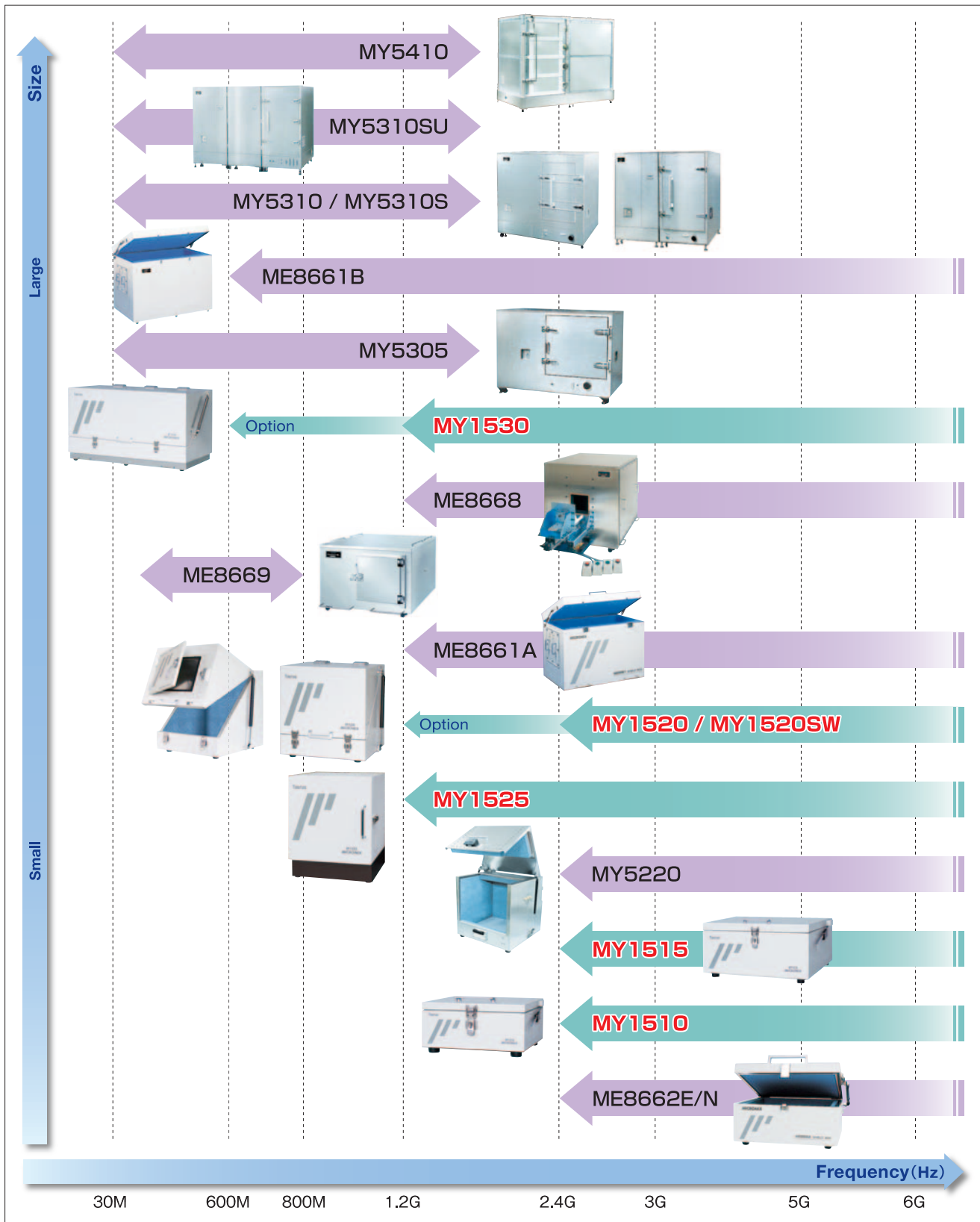
Biconical antenna MAN150



Broadband, compact & lightweight

Frequency range: 20MHz to 3GHz
Gain: -45 to +1dBi nominal
Antenna factor: 20 to 51dB/m
Dimensions: 350(L)×160(W)×140(D)mm

Electromagnetic anechoic box Lineup



MICRONIX Corporation reserves the right to make changes in design, specification and other information without prior notice.

MICRONIX
MICRONIX CORPORATION

2987-2, KOBIKI-CHO, HACHIOJI-SHI, TOKYO 193-0934 JAPAN
 TEL. +81-42-637-3667 FAX. +81-42-637-0227
 URL: <http://www.micronix-jp.com> E-mail: micronix_e@micronix-jp.com

AGENCY